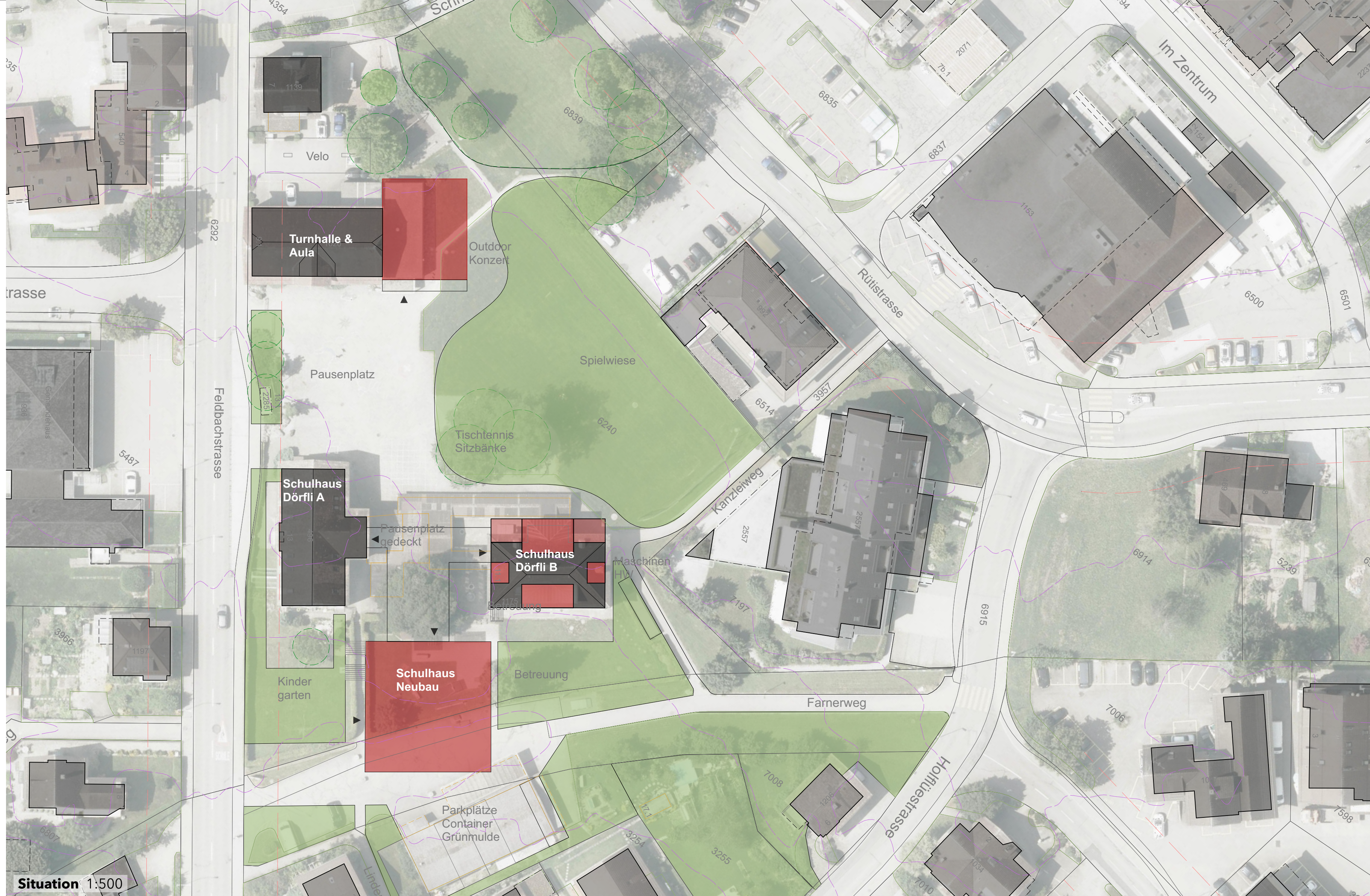
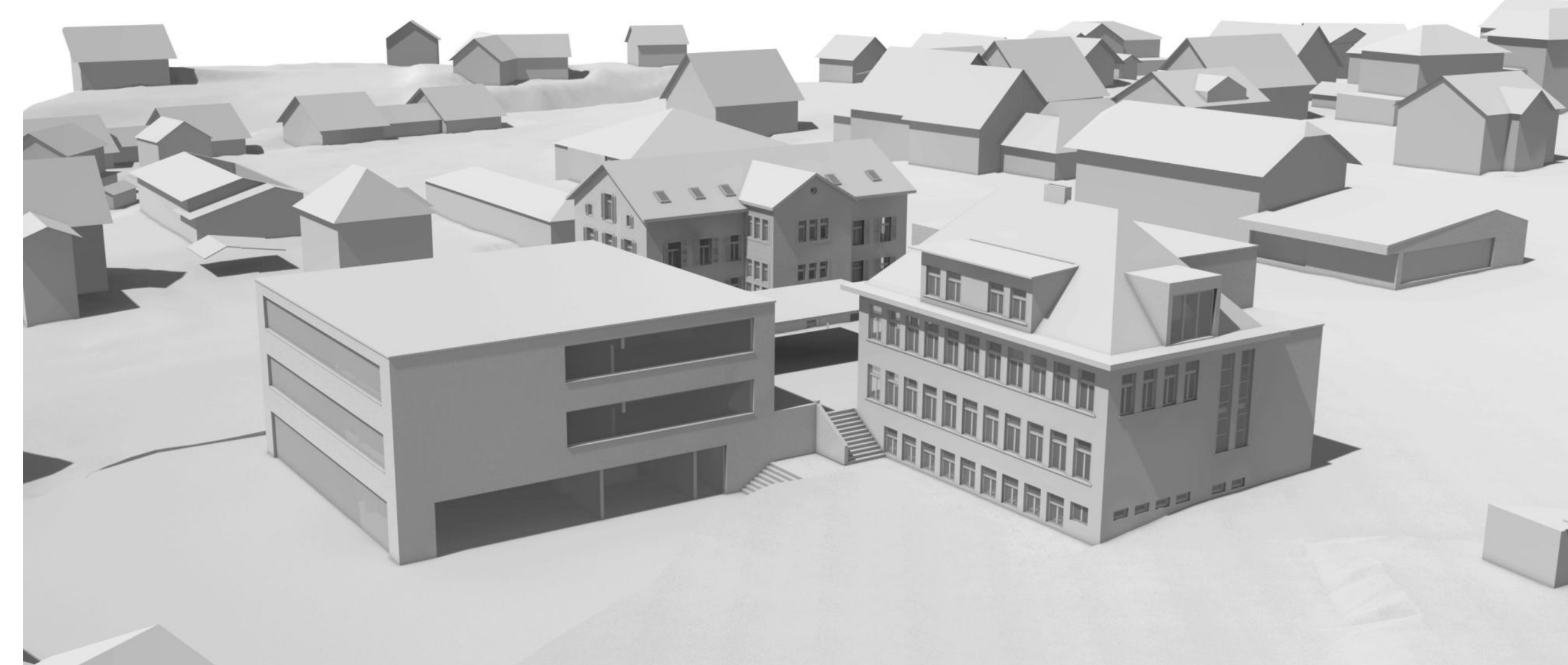
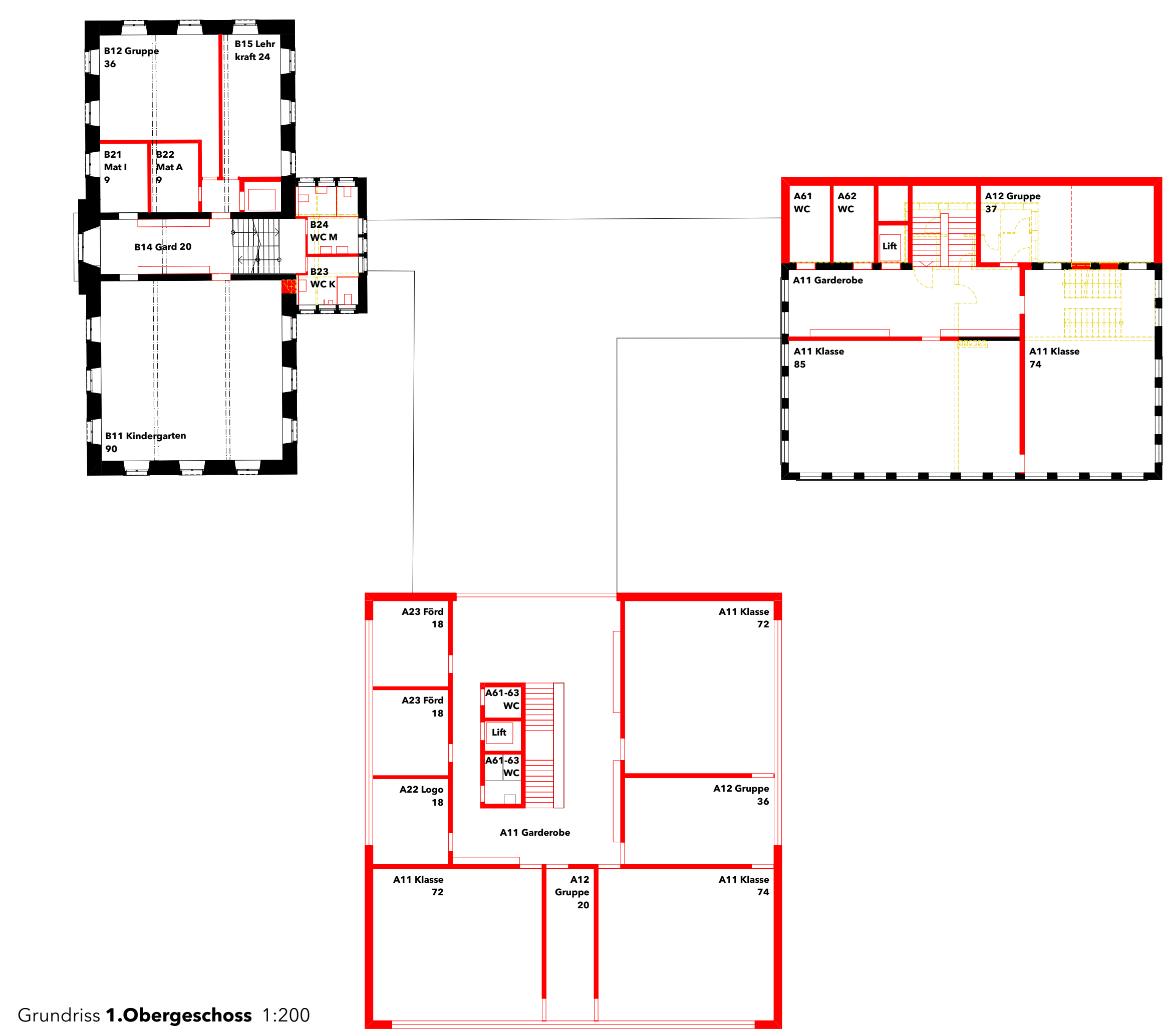
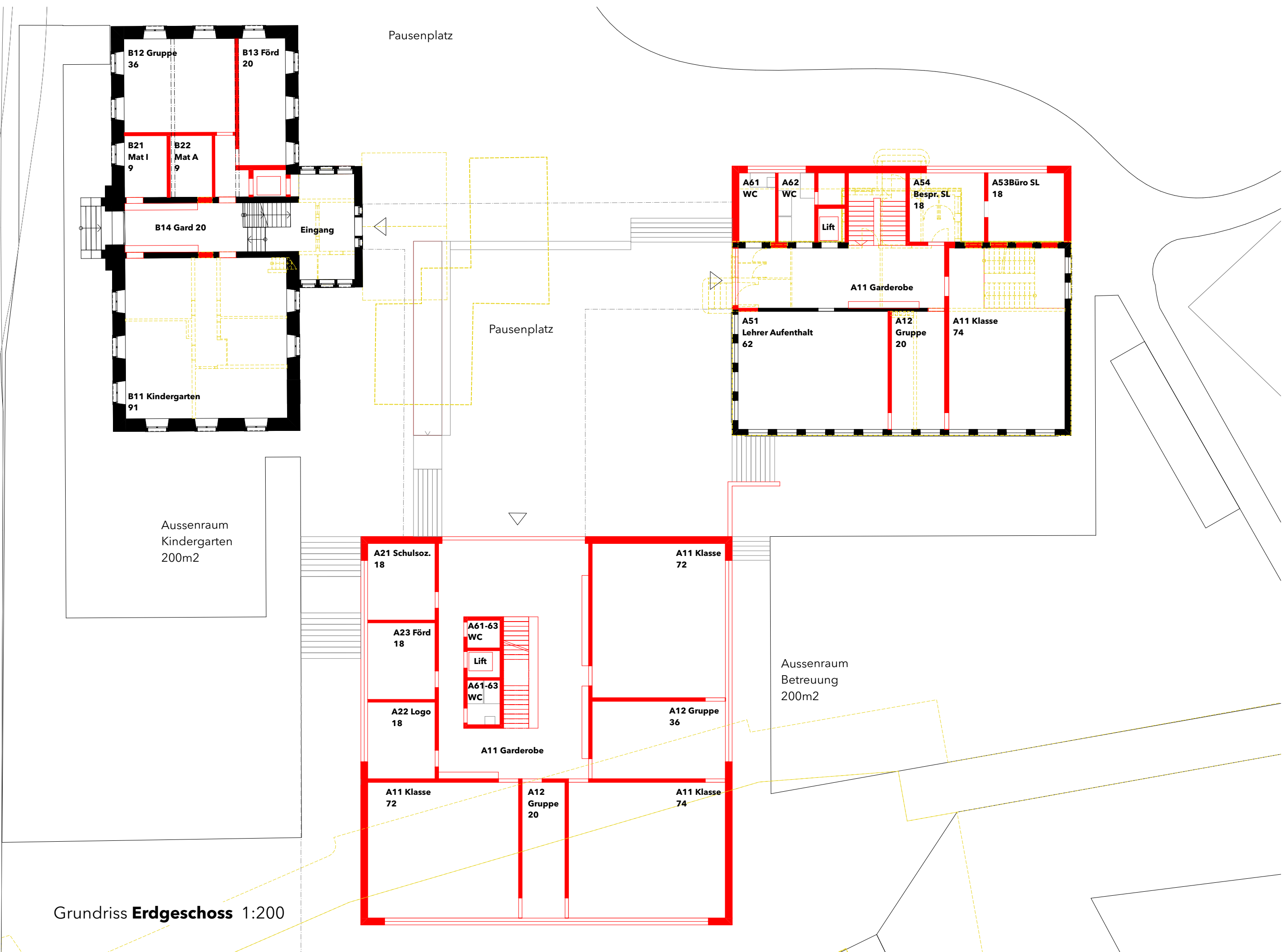


# Machbarkeitsstudie Schulanlage Dörfli Informationsveranstaltung

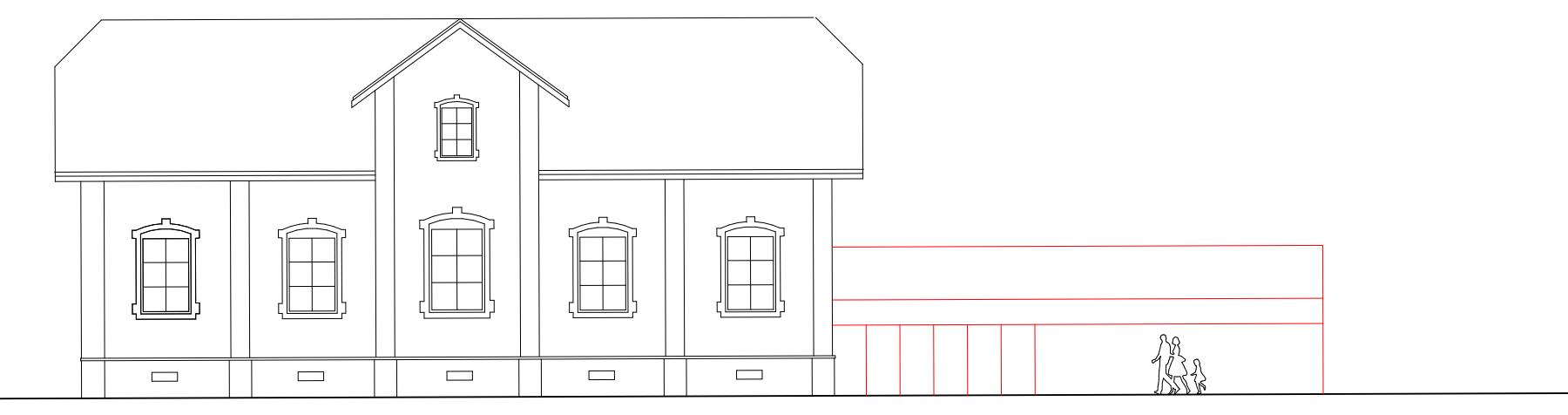
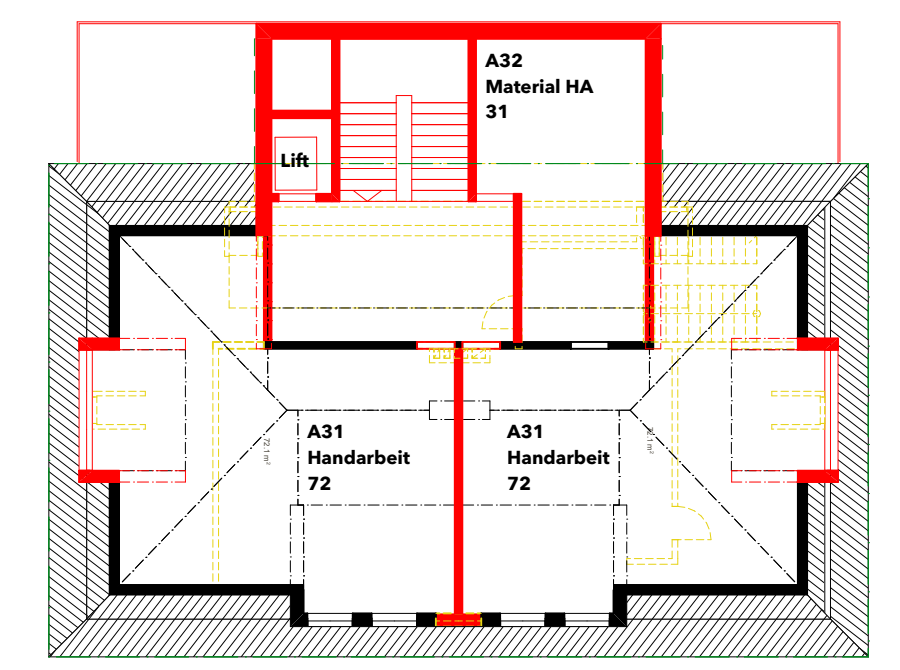
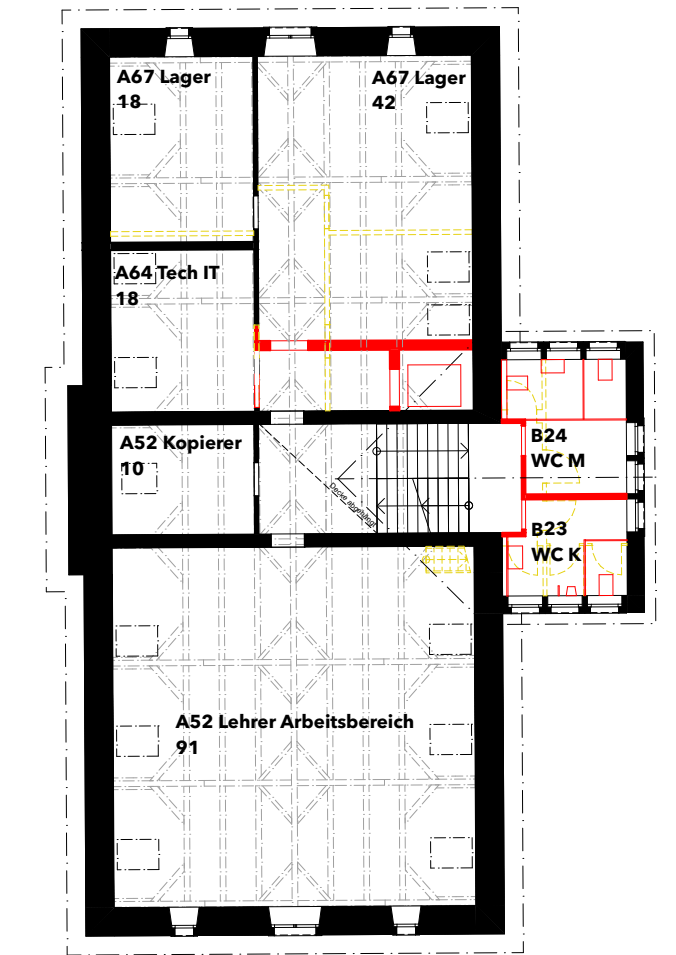
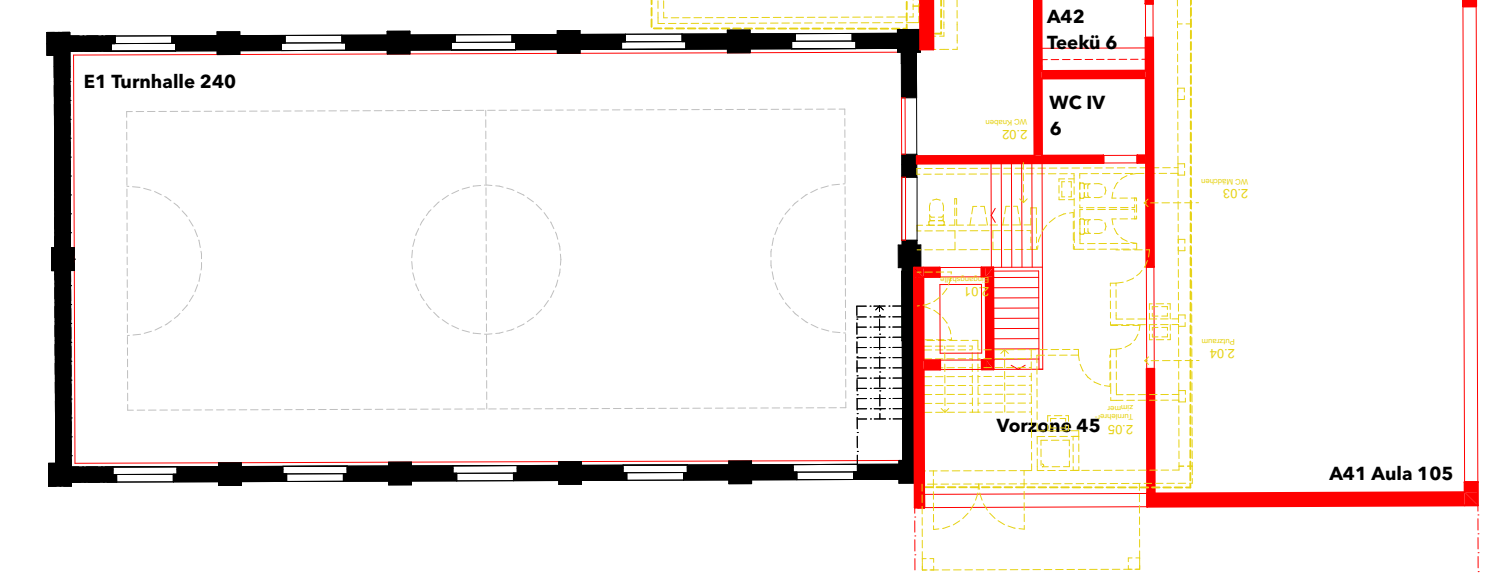
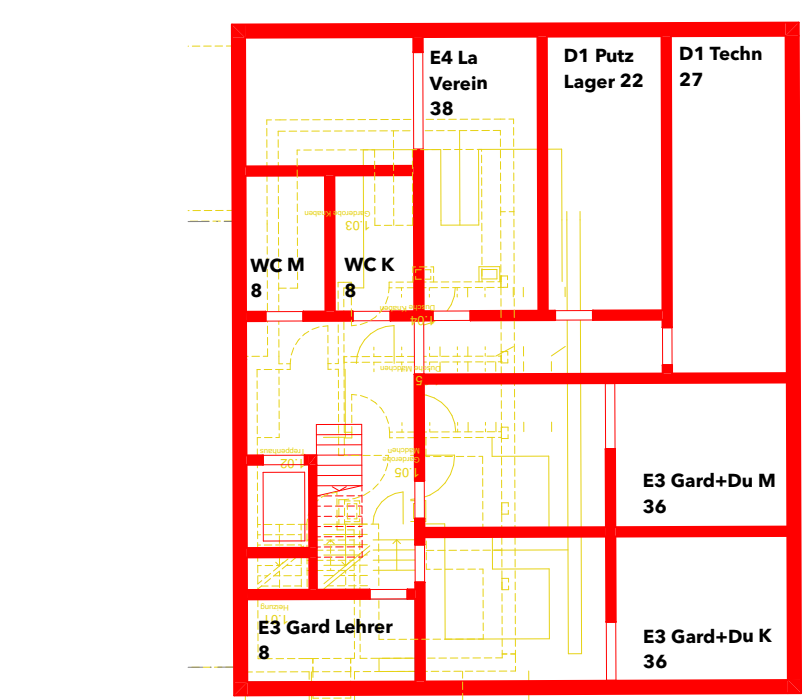
Planstand: 10.05.2023



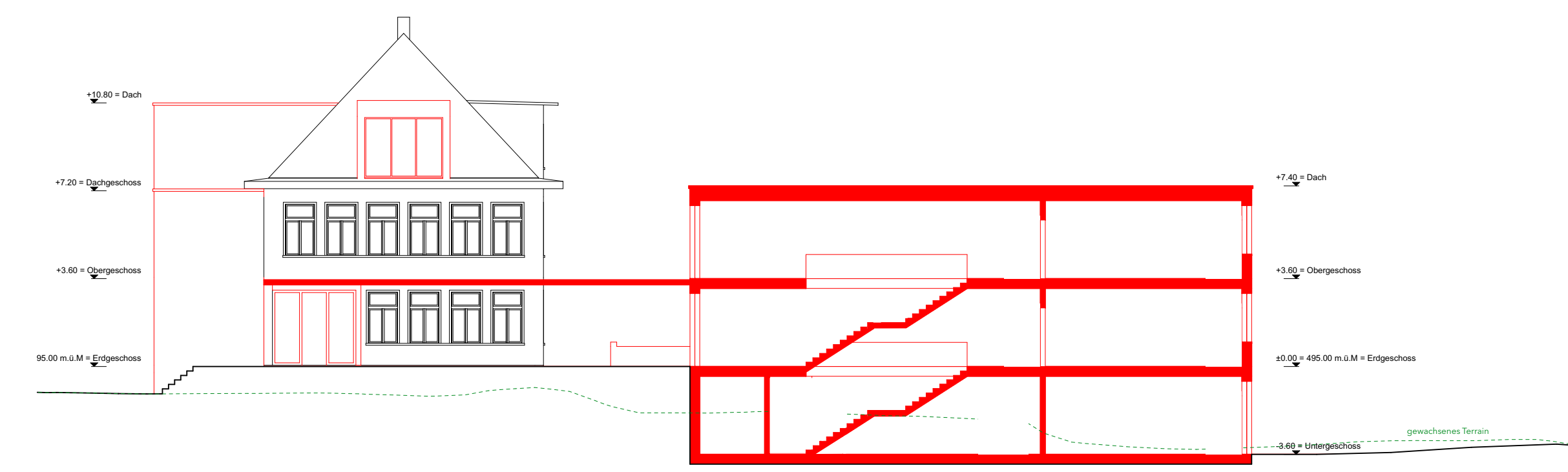
häberli heinzer steiger architekten ETH FH SIA | Zürcherstrasse 61 | CH-8406 Winterthur | +41 52 202 92 57 | www.hhs-architekten.ch



Abbruch  
Bestand  
Neu



Ansicht Turnhalle und Aula SO 1:200



Ansicht Schulhaus B SW / Schnitt Neubau 1:200

Grundriss Untergeschoss Turnhalle und Aula 1:200

Grundriss Erdgeschoss Turnhalle und Aula 1:200

Grundriss Dachgeschoss 1:200